

Home & Land Package

Tropical 245

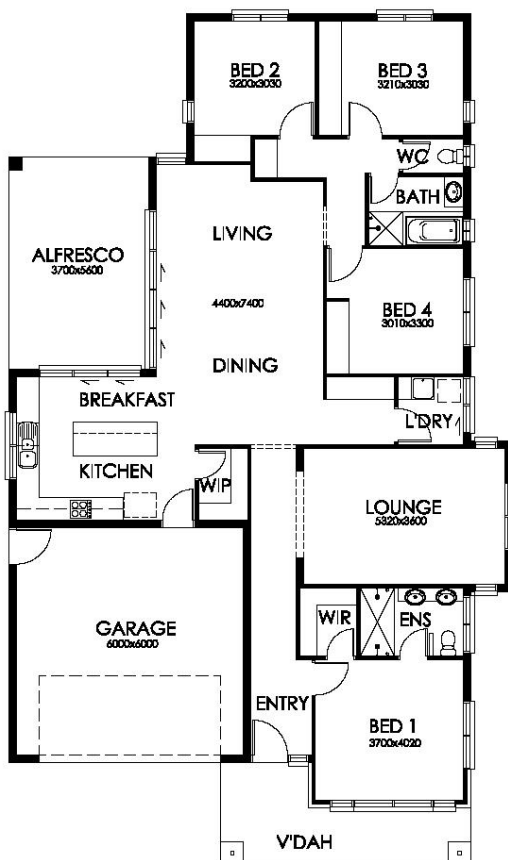


Tropical 245



Lot 54 Beadsworth St, Baranduda
Avalon Park Estate
Area: 634m²

\$430,110



MOVE IN READY INCLUSIONS:

As Per Hosies Homes Standard Inclusions List

Living Area: 174.09 m²

Alfresco: 20.72 m²

Total: 245.91

Garage: 38.44 m²

Porch: 12.66 m²

Width: 13.30m

Depth: 22.50m

- 12W LED Down lights throughout main living areas.
- 3 Coat Haymes wash & wear paint system.
- Solution Dyed Nylon carpet with 10mm quality air step underlay to bedrooms and lounge.
- Dry Area tiles or vinyl planks to Living, dining, kitchen and hallways large choice design specific.
- 2550mm Internal Ceiling height
- 450mm Eaves (design specific) with Haymes Solar shield paint system.
- Ducted Heating – Braemar 4.7 Star Gas with ducts to bedrooms and Living areas.
- Ducted Cooling – Braemar Evaporative with ducts to bedrooms and living areas.
- Up to 40m² of Driveway
- Up to 15m² of Paths
- Site Allowance
- Land by Agent

Subject to soil test, survey & site conditions. Price may change without further notice.

Exclusions unless otherwise specified: the construction contract does not provide for the following and/or similar items and/or their installation and/or any additional works to facilitate installation: Window furnishings; landscaping; fencing; decorative light fittings; external rendering to brick work; retaining walls; landscaping; fencing; fireplaces; soft furnishings; vehicles; any siteworks other than specifically stated in site estimate; any items not specified on inclusion lists and/or colour selections and/or plans, and not specifically costed in by the builder. The Plans & Elevations are an artists impression only.



Ph. 1800 4HOMES

www.hosieshomes.com.au
sales@hosieshomes.com.au